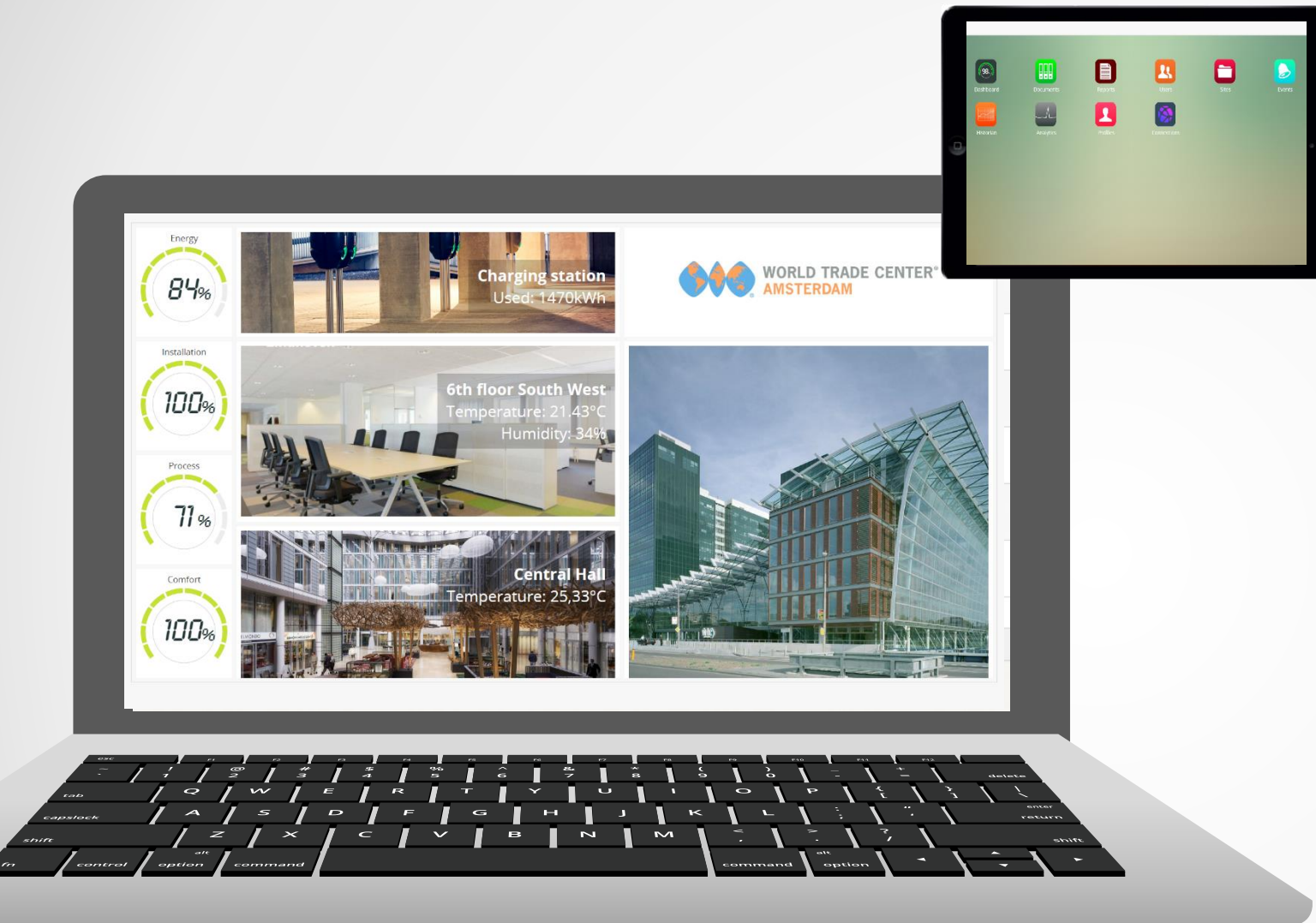


A man in a dark blue suit, white shirt, and patterned tie is shown from the chest down. He is holding a white smartphone in his hands, looking at the screen. The background is a blue-tinted city skyline with various skyscrapers under a cloudy sky. The overall aesthetic is professional and modern.

SIMAXX

Brings your building to life....



ABOUT

Simaxx enhances the consciousness of your building. It continuously monitors and tells you how to improve the performance in terms of well-being, operational costs and energy consumption.

CLIENTS

CBRE, Bouwinvest, Engie, Cushman & Wakefield, ABN AMRO

TECHNOLOGIES

Open source platform, Big Data, Analytics, Cloud Software, Smartbuilding Platform

FOUNDED

2016

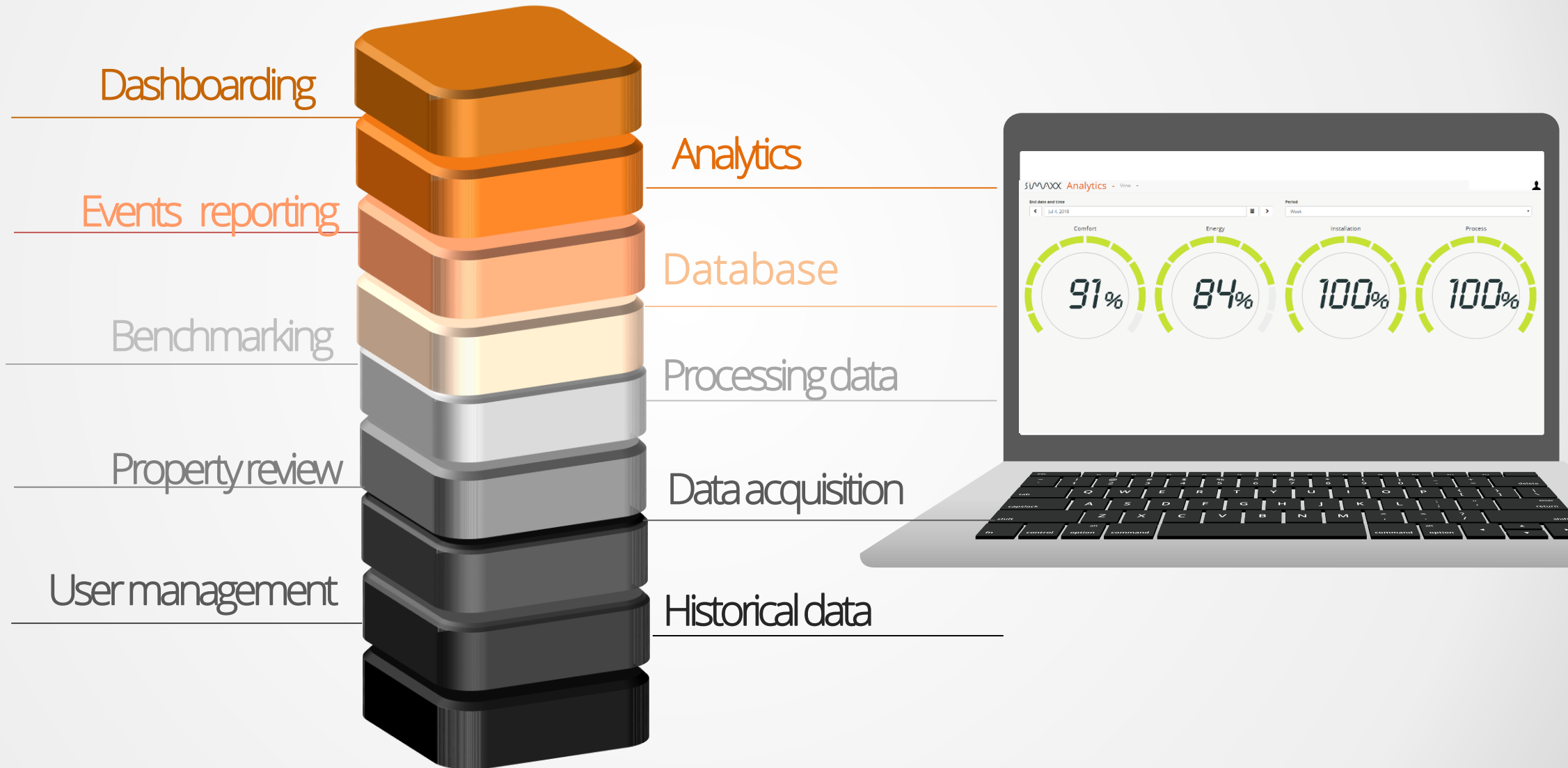
NUMER OF EMPLOYEES

20

DATA IS EVERYWHERE IN BUILDINGS AND INSTALLATIONS.....



SIMAXX PLATFORM



PROPERTY MANAGEMENT BUSINESS CHAIN



PROPERTY MANAGEMENT BUSINESS CHAIN

RESPONSIBLE FOR

Overall management of the building & tenants / end users.

INTERESTED IN

Reports and KPI's of Installation, comfort and energy usage (for it's own section of the building).

RESPONSIBLE FOR

Operational usage / maintaining of the BMS of the building. Typically have more than 1 property in their portfolio.

INTERESTED IN

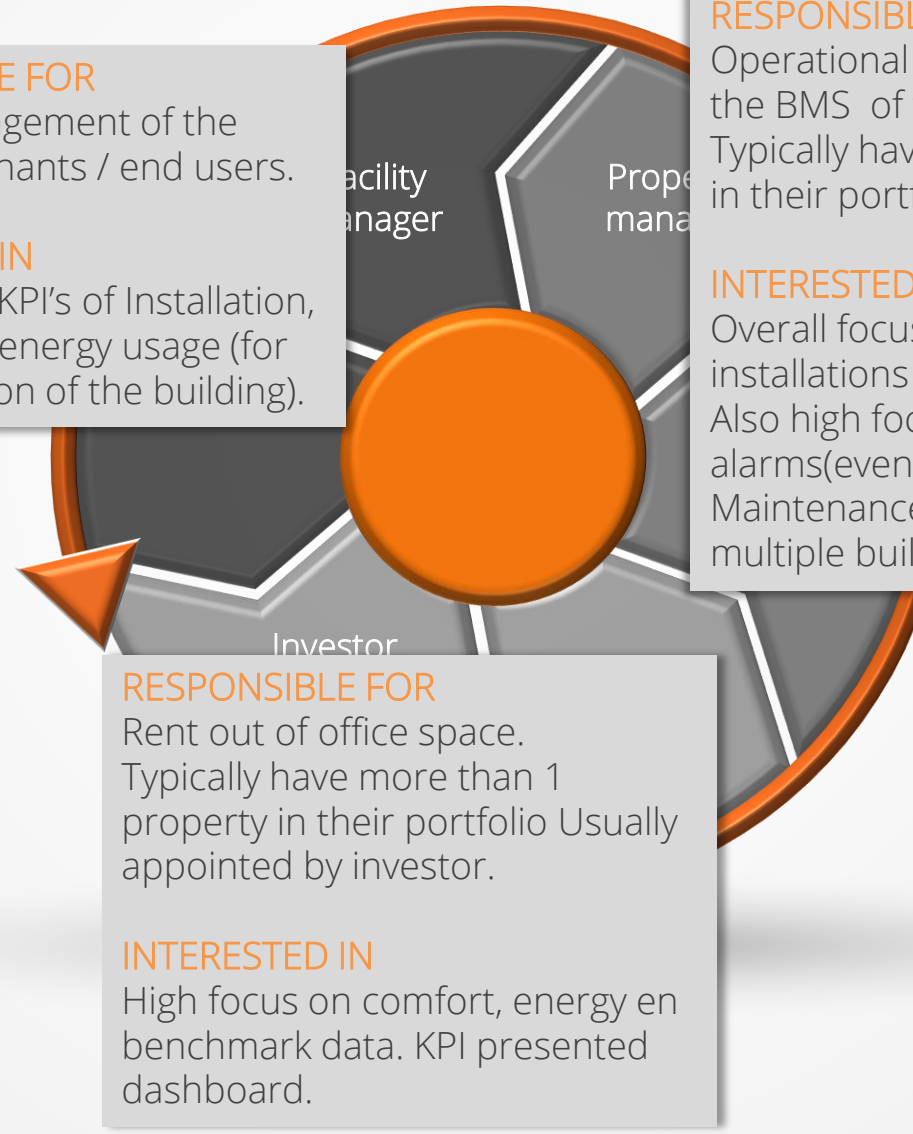
Overall focus on the condition of installations and comfort of its users. Also high focus on building related alarms(events) for follow up. Maintenance contracts across multiple buildings in portfolio.

RESPONSIBLE FOR

Rent out of office space. Typically have more than 1 property in their portfolio Usually appointed by investor.

INTERESTED IN

High focus on comfort, energy en benchmark data. KPI presented dashboard.



IOT SMART BUILDING TRENDS 2018

1. PREDICTIVE MAINTENANCE

Makes use of IoT sensors and other hardware devices to get a report on the state of a commercial building and all equipment in it. It gives you the exact time when maintenance needs to be performed.

2. AIR QUALITY MEASUREMENT

One major trend to watch for in 2018 is how smart building air quality can have an impact on the productivity of workers. IoT devices can be used to check and measure the air quality as well as CO2 level.

3. HEAT CONTROL

The use of thermal imaging will allow managers to check for equipment that is outside of the temperature range. Making issue detection easier and enabling a maintenance timeframe before system disruption occurs.

4. IOT FOR BETTER ASSET OPTIMIZATION

IoT helps in better asset optimization. It enables managers to use technological solutions, improving uptime of building equipment mitigating possible loss of product.

5. IOT FOR ENERGY EFFICIENCY

The most important impact that IoT has on buildings is energy efficiency. Using data to provide well-founded information helps managers to control their assets better, further reducing harmful waste in the environment.

6. REAL-TIME DATA ACCESSIBILITY

IoT applications allow managers to conduct various experiments to check the result of optimization. It also enables them to use IoT devices in monitoring buildings systems using a single viewpanel.

Resources:

10 Trends Driving Intelligent Buildings, From Navigant Research
facilityexecutive.com

IT Trends 2018: The evolution of smart buildings into smart workplaces
Buildings.com

10 IoT Smart Building Trends to look out for in 2018
futureproptech.com

ANALYSES

24/7 control: Generating information out of data.



Automatic analysis



Automatic reports / Dashboards



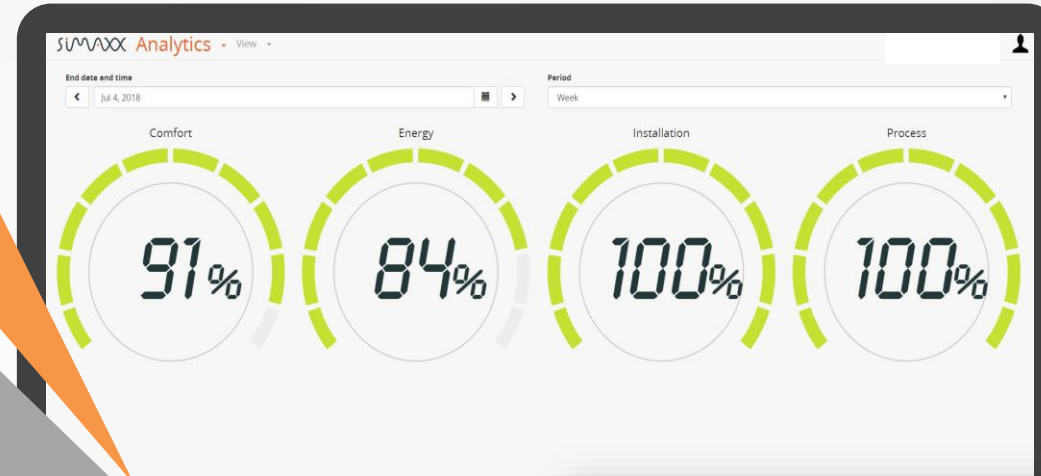
Lower energy consumption



Lower maintenance costs
consumption



Well-being



The SUMMAX Events dashboard displays a table of events. The table has columns for Site, Equipment, Event, Duration, and Options. The events listed are:

Site	Equipment	Event	Duration	Options
Roampoor	Room 6.31	The measured temperature has exceeded the Lower limit of 6500 7146degree Temperature Limit Method	1310 Year	
Roampoor	Core 4th floor	The measured temperature has exceeded the Upper Limit of 6500 7130 327C x 10	1307 Year	
Roampoor	Room 6.33	The measured temperature has exceeded the Upper Limit of 6500 7130 327C x 10	1307 Year	
Roampoor	Room 6.31	The measured temperature has exceeded the Upper Limit of 6500 7130 327C x 10	1307 Year	
Roampoor	Room 6.39	The measured temperature has exceeded the Lower limit of 6500 7146degree Temperature Limit Method	1306 Year	
Roampoor	Room 6.34	The measured temperature has exceeded the Upper Limit of 6500 7130 327C x 10	1306 Year	
Roampoor	Room 6.39	The measured temperature has exceeded the Upper Limit of 6500 7130 327C x 10	1306 Year	
Roampoor	Room 6.34	The measured temperature has exceeded the Upper Limit of 6500 7130 327C x 10	1306 Year	
Roampoor	Room 6.37 South West	The measured temperature has exceeded the Lower limit of 6500 7146degree Temperature Limit Method	1306 Year	
Roampoor	Room 6.37 North West	The measured temperature has exceeded the Upper Limit of 6500 7130 327C x 10	1306 Year	
Roampoor	Room 6.23	The measured temperature has exceeded the Lower limit of 6500 7146degree Temperature Limit Method	1070 Year	
Roampoor	Core 4th floor	The measured temperature has exceeded the Upper Limit of 6500 7130 327C x 10	1077 Year	
Roampoor	Room 6.25	The measured temperature has exceeded the Upper Limit of 6500 7130 327C x 10	1077 Year	
Roampoor	Room 6.21	The measured temperature has exceeded the Upper Limit of 6500 7130 327C x 10	1077 Year	

DASHBOARDS


Enabling users to focus on specific information & KPI's.




ENERGY CONSUMPTION

Insides in inefficient use of energy.

Example: The central heating system does not work efficiently.
The result: The building is heated all year, this creates an unnecessarily high energy bill.



Automatic analysis



Automatic reports / Dashboards



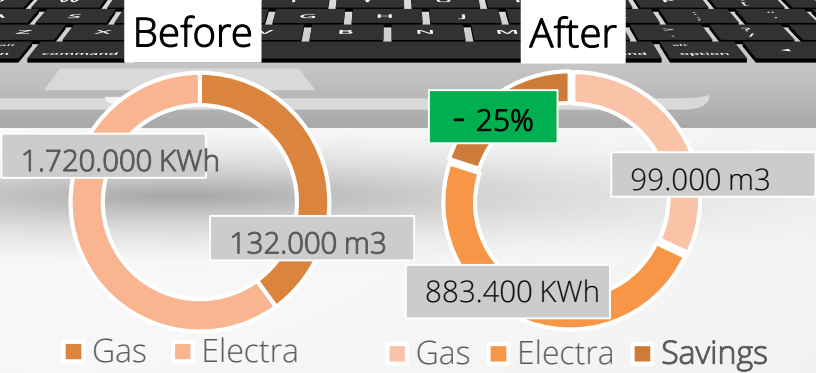
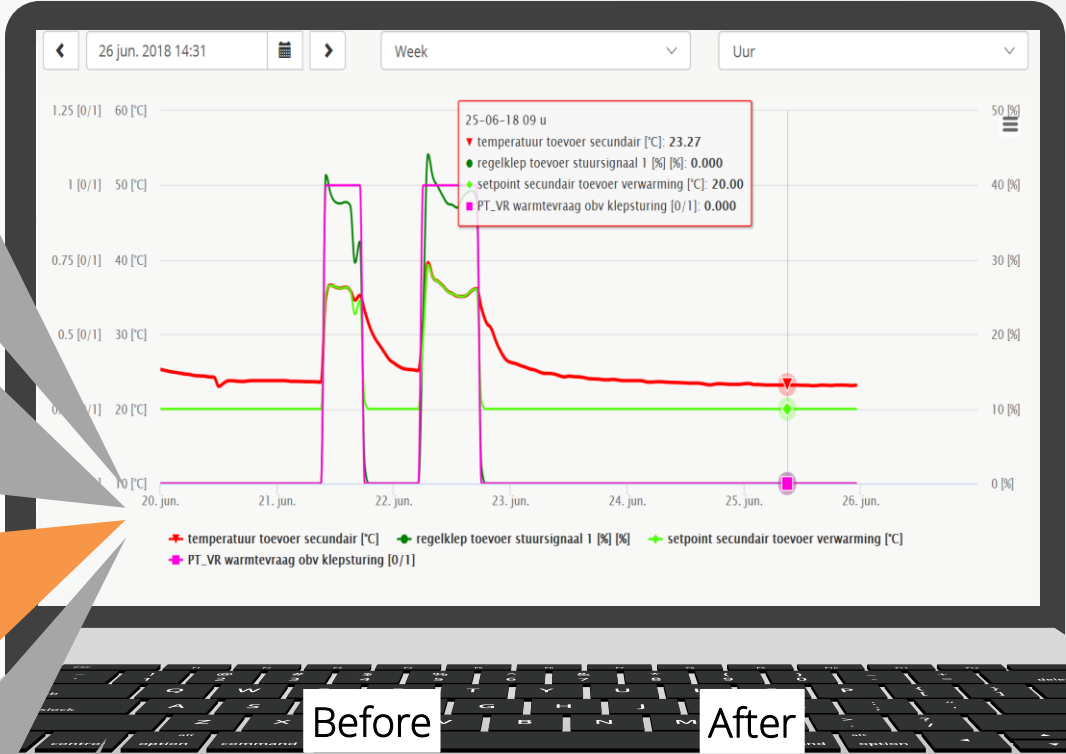
Lower energy consumption



Lower maintenance costs



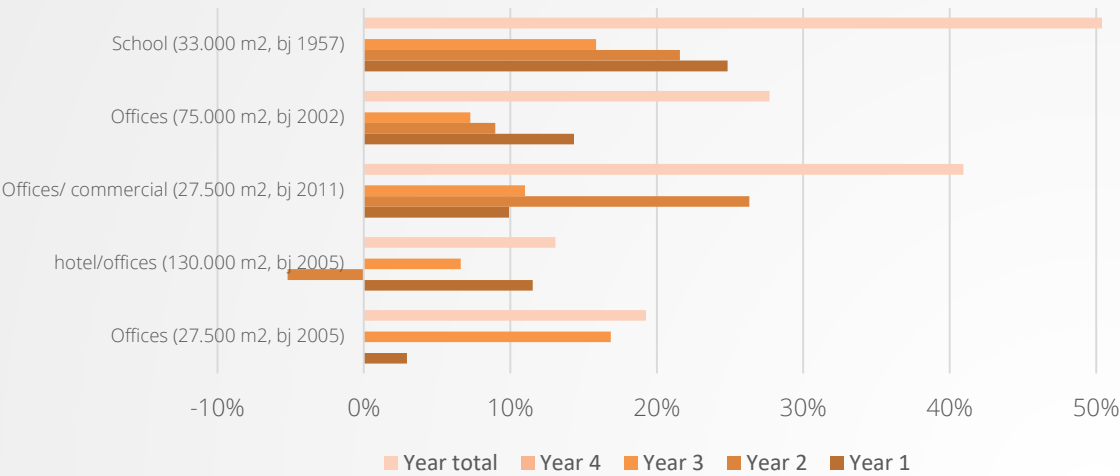
Well-being



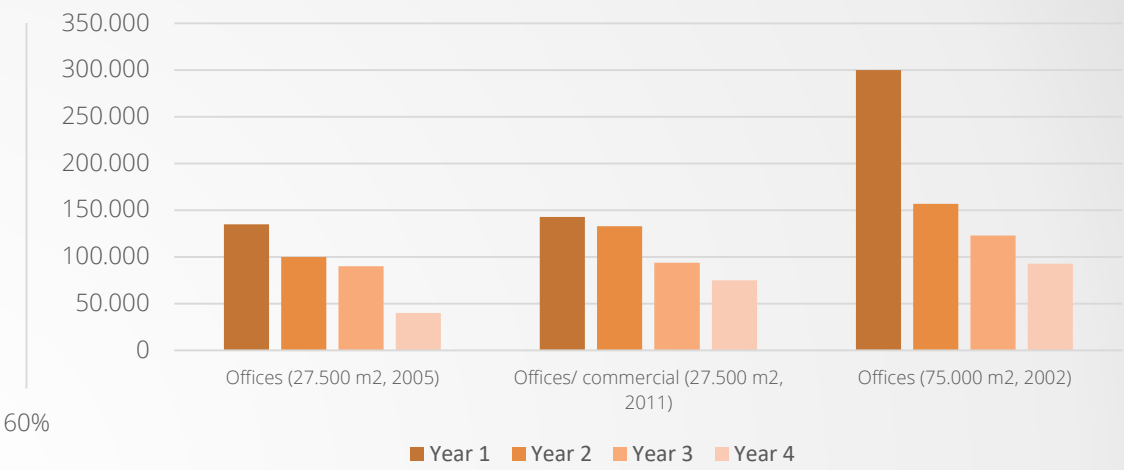
SAVINGS

Proven records.

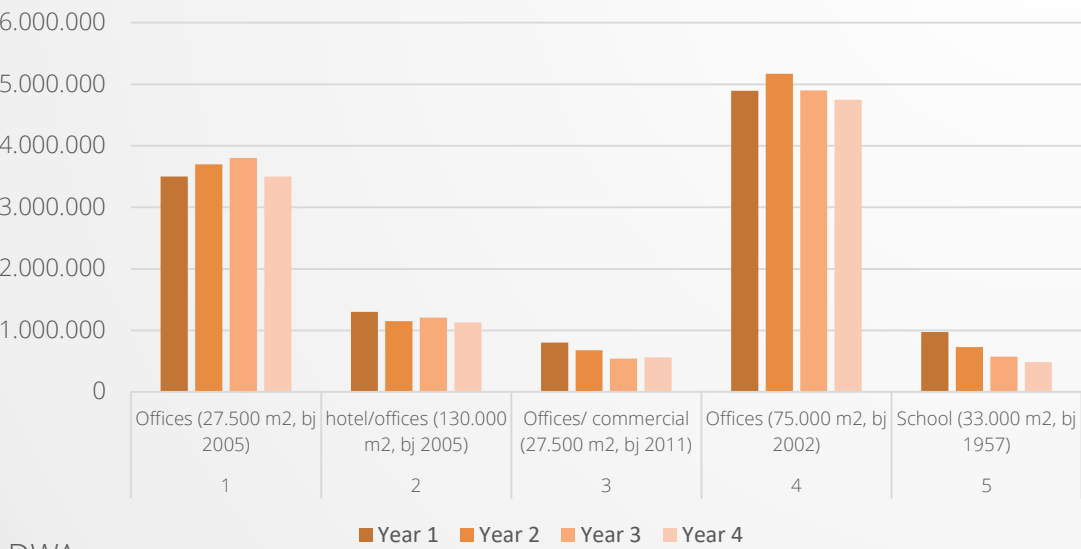
Yearly energy savings after installation Simaxx



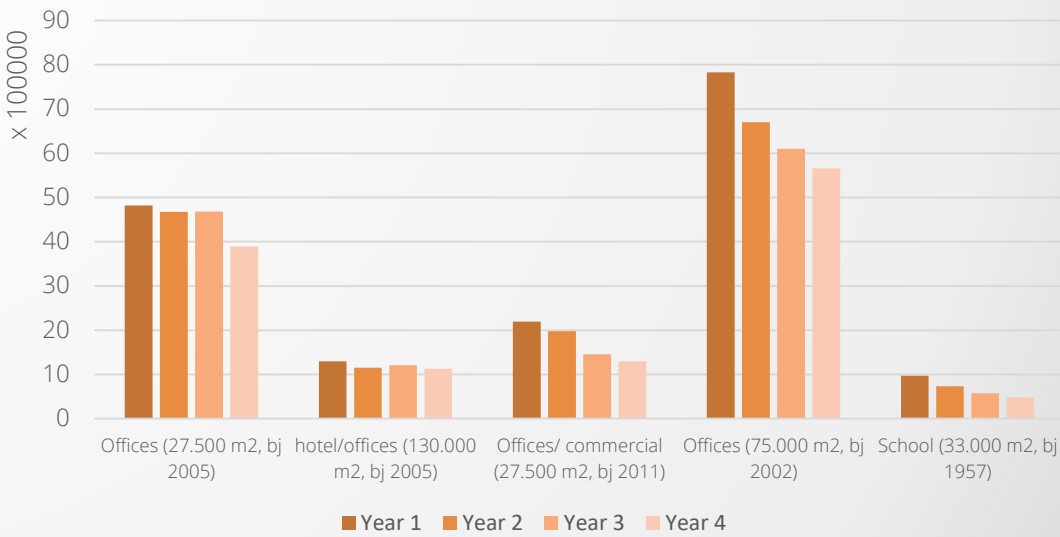
Gas consumption after installation Simaxx



Electrical consumption after installation Simaxx



Energy consumption after installation Simaxx




PREDICTIVE MAINTENANCE

Prevent disruptions in the technical installations. By focusing on questions like:
What's likely to happen next?
Why is that happening?
What is the optimum?



Automatic analysis



Automatic reports / Dashboards



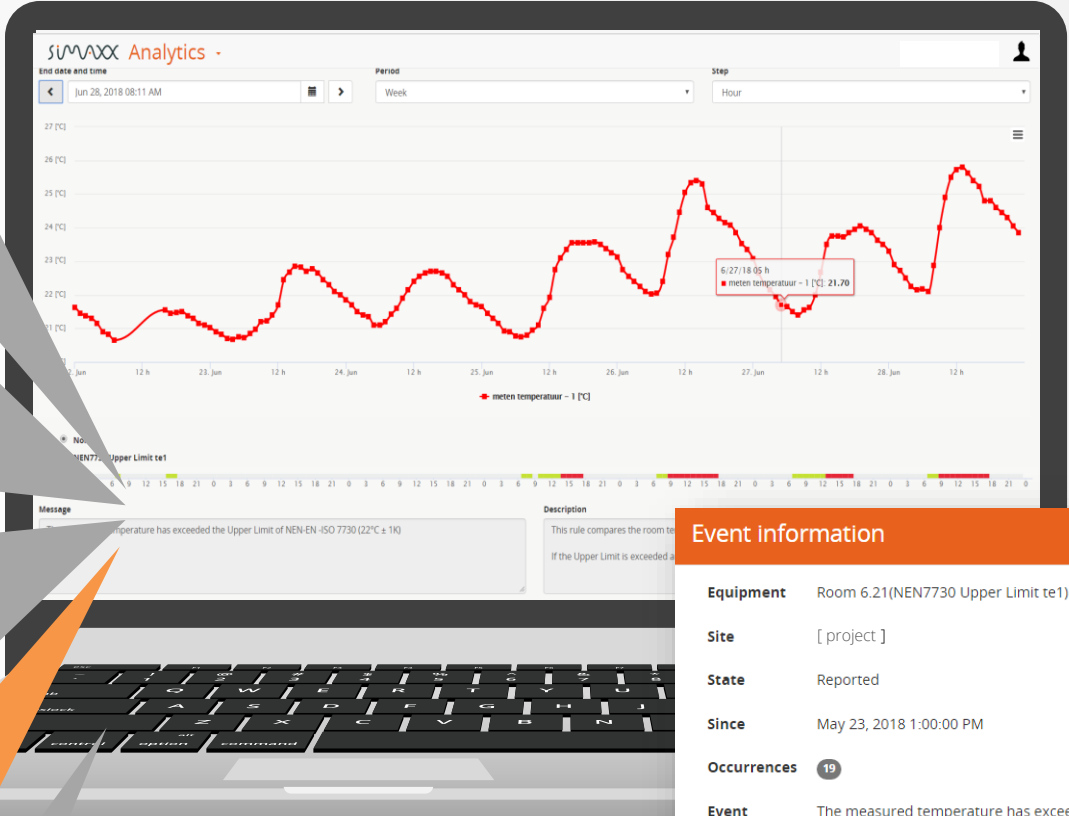
Lower energy consumption



Lower maintenance costs



Well-being



Event information

Equipment

Room 6.21(NEN7730 Upper Limit te1)

Site

[project]

State

Reported

Since

May 23, 2018 1:00:00 PM

Occurrences

19

Event

The measured temperature has exceeded the Upper Limit of NEN-EN -ISO 7730 (22°C ± 1K)

Description

This rule compares the room temperature with the Upper Limit of NEN-EN - ISO 7730 (22°C ± 1K) If the Upper Limit is exceeded an event will occur

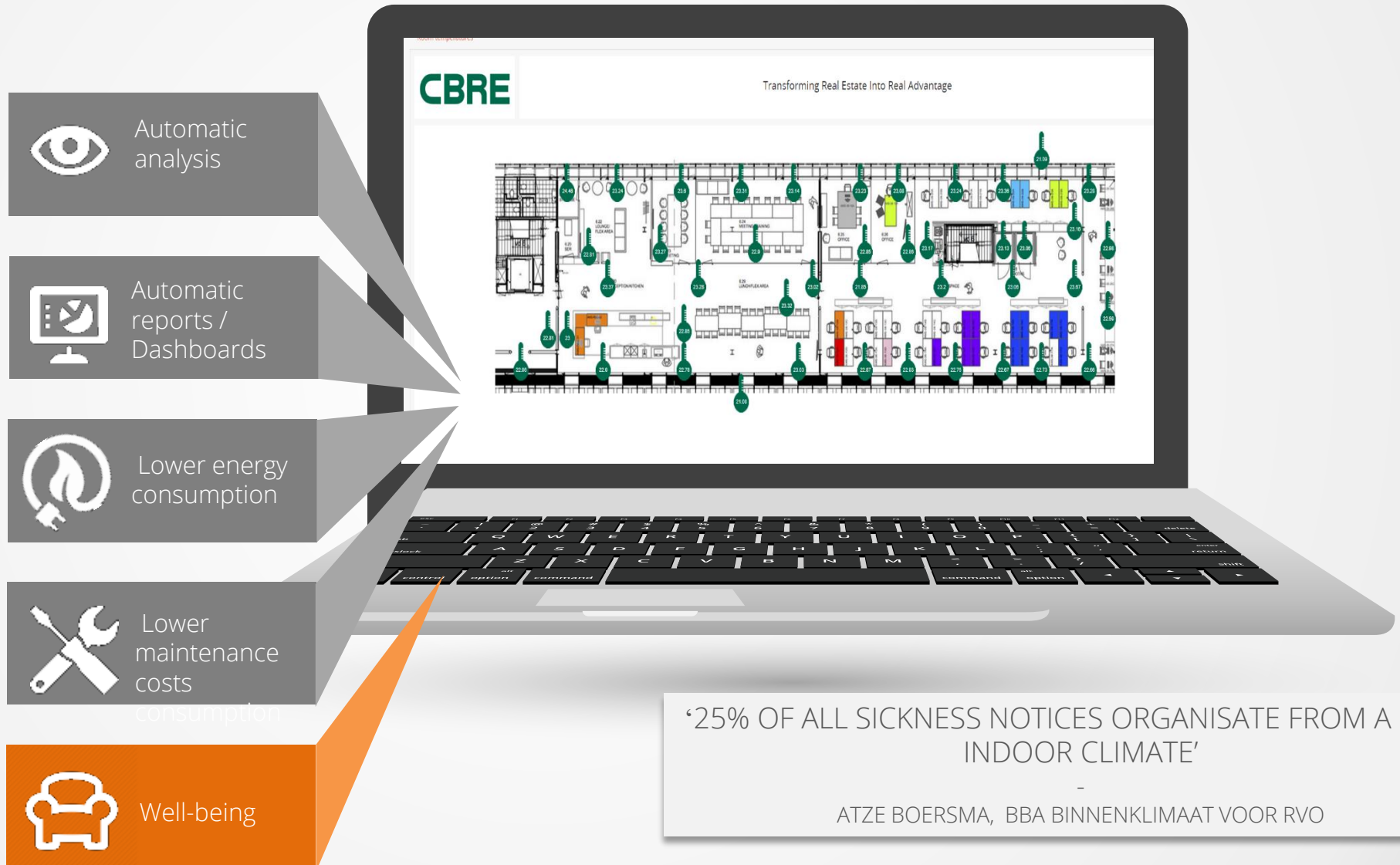
Close

WELL-BEING

A healthy mind through a healthy building.

'BETTER INDOOR QUALITY CAN LEAD TO A PRODUCTIVITY
IMPROVEMENT OF 8 – 11 %'

—
WGBC RESEARCH HEALTH, WELL-BEING & PRODUCTIVITY IN OFFICES

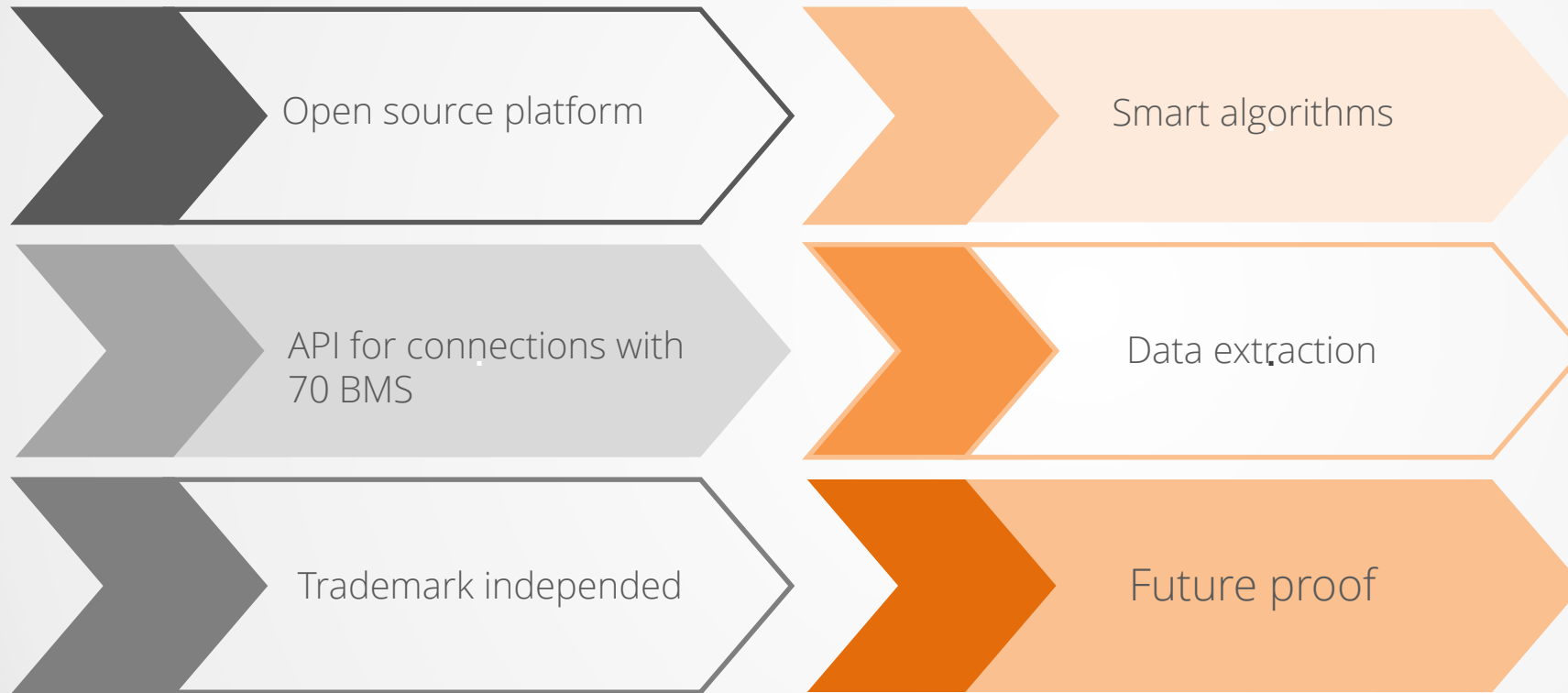


'25% OF ALL SICKNESS NOTICES ORGANISATE FROM A POOR
INDOOR CLIMATE'

—
ATZE BOERSMA, BBA BINNENKLIMAAT VOOR RVO

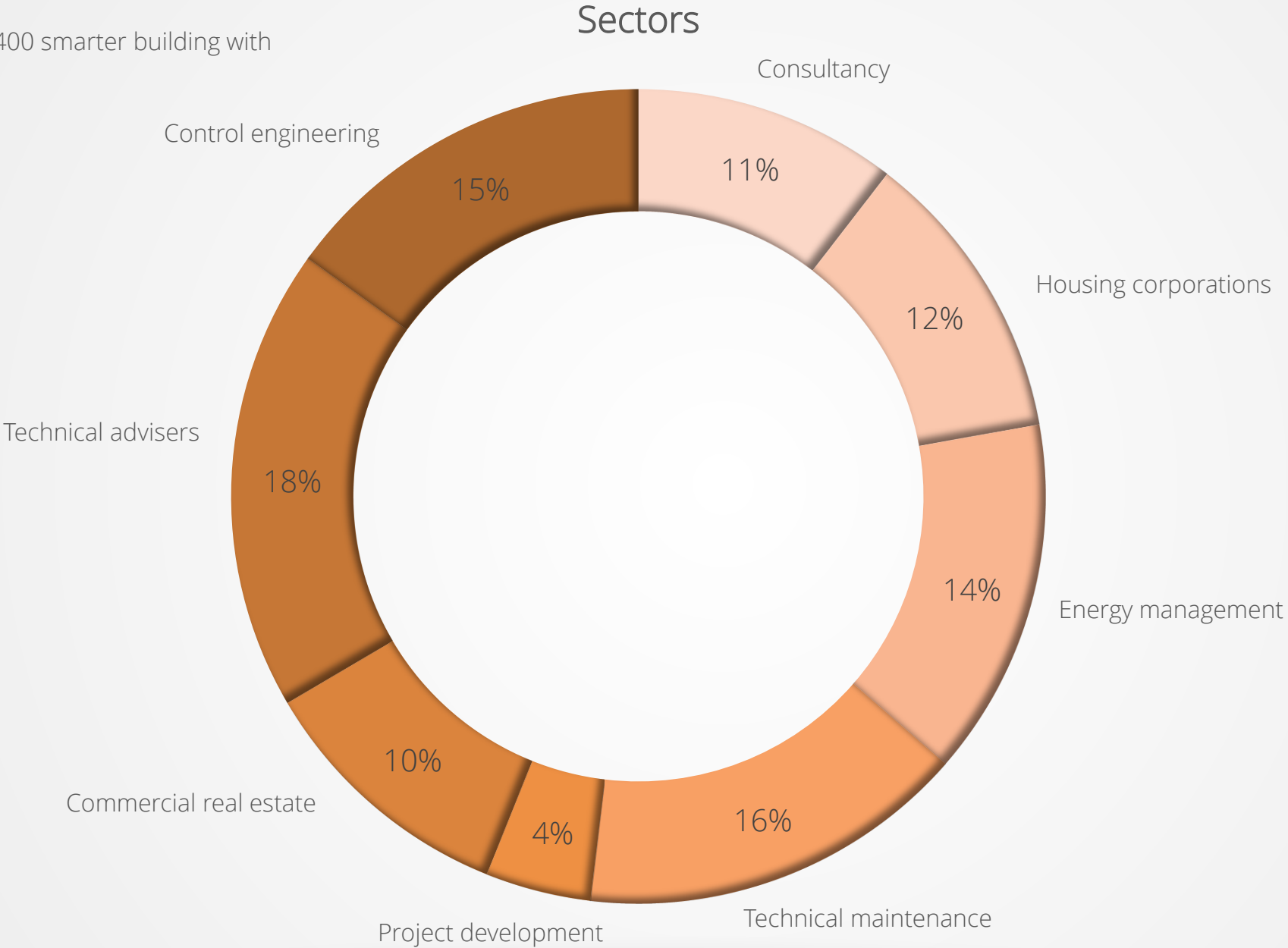
HOW DOES SIMAXX WORKS...

knowledge is power.



FIGURES

Simaxx created over 400 smarter building with 900 users.



SEGMENTS

<p>Banks</p> 	<p>Offices</p> 	<p>Leisure</p> 
<p>Governments</p> 	<p>Sports accomodations</p> 	<p>Schools</p> 



Process



Waternetemperature
competition pool: 28.54 °C
tropical swimming paradise: 30.32 °C



ontwikkeld
beheer

wdw

Installation



Yield solar panels
22981.44kWh average this month

Comfort



Saved compared to 2011

Gas: 122959m3

🏠 x 73.3

Electricity: 659789kWh

🏠 x 188.5

CO₂: 599200kg

🏠 x 124.8

VAN DORP
MET KENNIS EN RESPECT

simaxx



De Scheg

BELEVING IN BEWEGING

RECENT WINS



WTC AMSTERDAM



KRAANSPOOR AMSTERDAM



WTC ROTTERDAM



DUTCH TAKS OFFICE

CBRE

unica

Dwa

CUSHMAN &
WAKEFIELD

croonwolver&dros | TBI

Bouwinvest

VAN DORP
installaties

RENSSEN
REGELTECHNIEK

Eneco

HOMI

ENGIE

heijmans

kadaster

Staedion

viDomes
wonen is leven

AKOtech

ABN·AMRO

vanhout