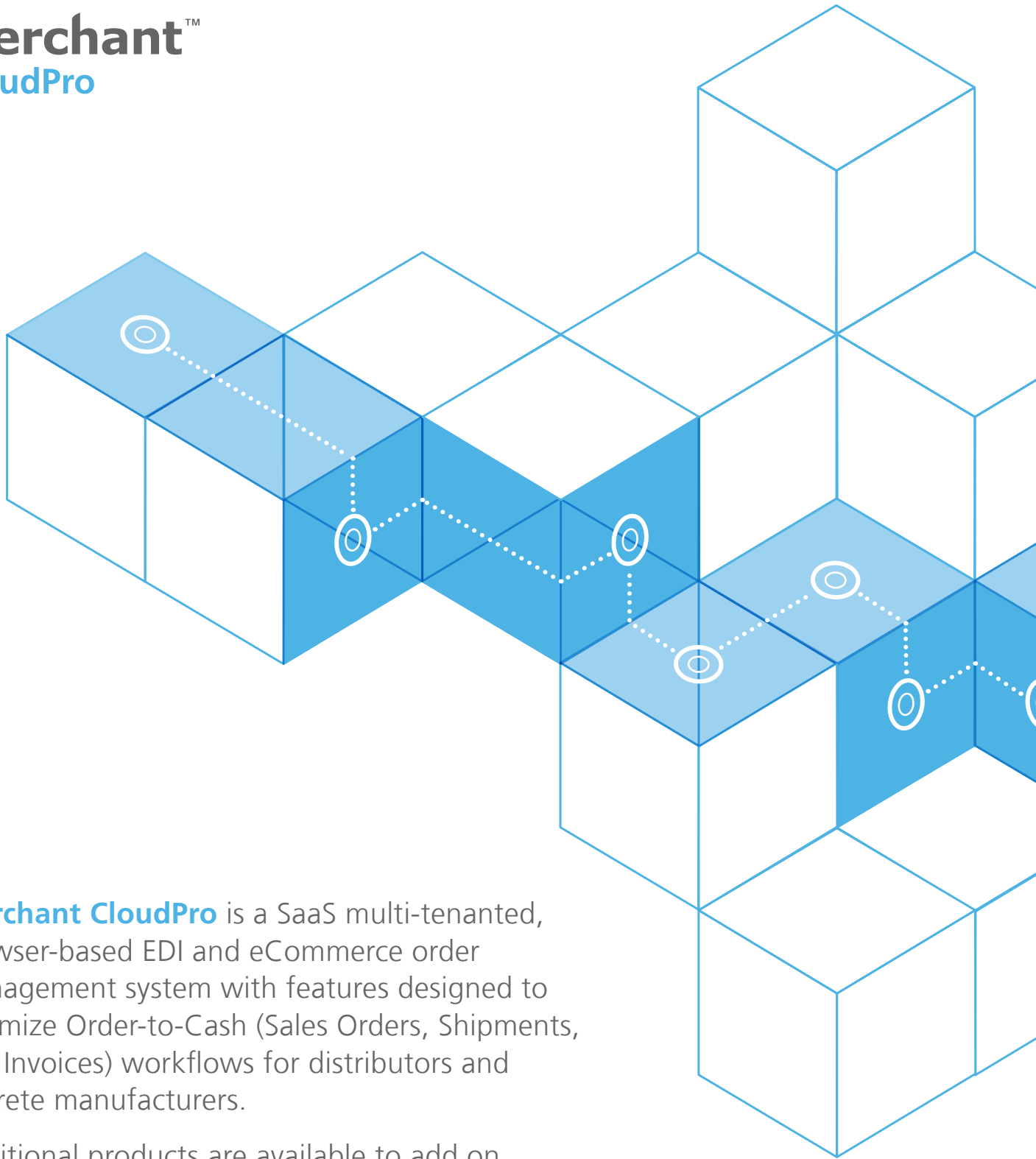


merchant™ CloudPro



Merchant CloudPro is a SaaS multi-tenanted, browser-based EDI and eCommerce order management system with features designed to optimize Order-to-Cash (Sales Orders, Shipments, and Invoices) workflows for distributors and discrete manufacturers.

Additional products are available to add on features for maximized supply chain performance.

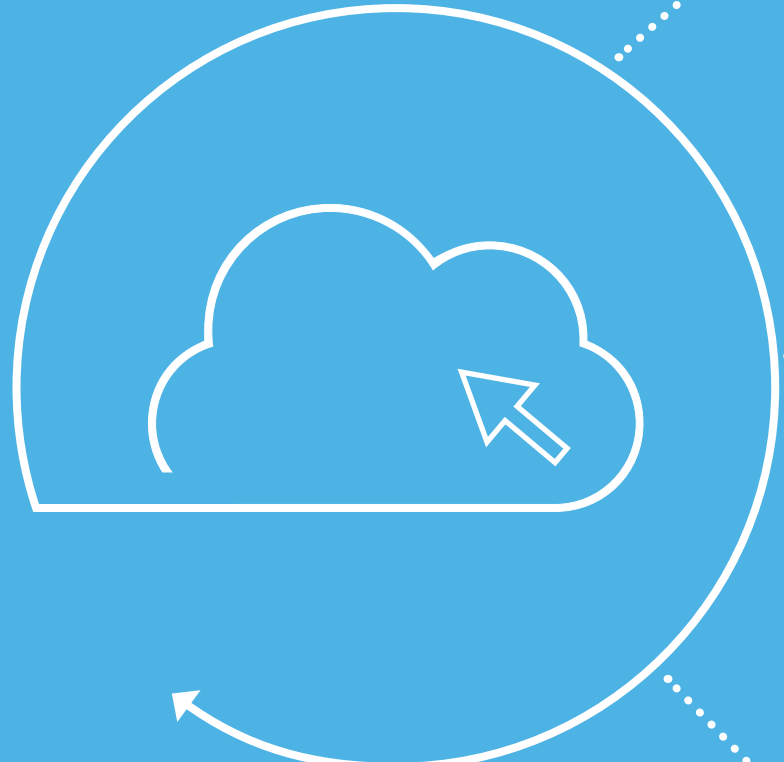
edisoft®

Merchant CloudPro



Connectivity

- Connect to more trading partners with flexible communication options
- Multi-protocol support through VAN or Direct communications
 - AS2
 - FTP
 - FTPS
 - SFTP



EDI Translator

- SaaS multi-tenanted, browser-based order management – work from anywhere, anytime
- Inbox & Outbox with configurable e-mail notifications
- Auto-post EDI Purchase Orders as ERP Sales Orders, with optional exception-handling features*
- Auto-generate and send outbound EDI Documents [Invoice (810), ASN (856), Inventory Advice (846) and more!]*



Trading Partners and Labels

- Unlimited library of Trading Partner kits maintained per vendor guidelines and specifications
- Unlimited library of certified vendor-compliant labels (GS1, UCC-128, DVS Packing Slips)
- Print Labels (EDI & eCommerce) directly from Merchant Cloud – eliminate 3rd Party Portals
- EDI Compliance based on ANSI X.12, EDIFACT data standards, supporting XML, JSON, CSV data formats

ASN/BC Module Options

- Manual ASN/BC with pick & pack screens to drag and drop items in cartons and cartons on pallets
- Auto ASN / BC with configurable rules to 'auto-pack' items in cartons and cartons on pallets
- QuikPAK ASN / BC, deployed in the warehouse, to wave, pick, pack and label EDI orders with handheld barcode scanners that automatically capture shipment profile (items in cartons and cartons on pallets)



EDI Integration Add-Ons*

- Supplier EDI (Inbound 810, 856 | Outbound 850, 875)
- 3PL Supplier (Inbound 940, 943 | Outbound 945, 944)
- 3PL Customer (Inbound 945, 944 | Outbound 940, 943)
- Motor Carrier Freight (Inbound 210)
- Planning & Scheduling (Inbound 830, 862)

*Requires ERP Connector and/or Edisoft's Quikpak

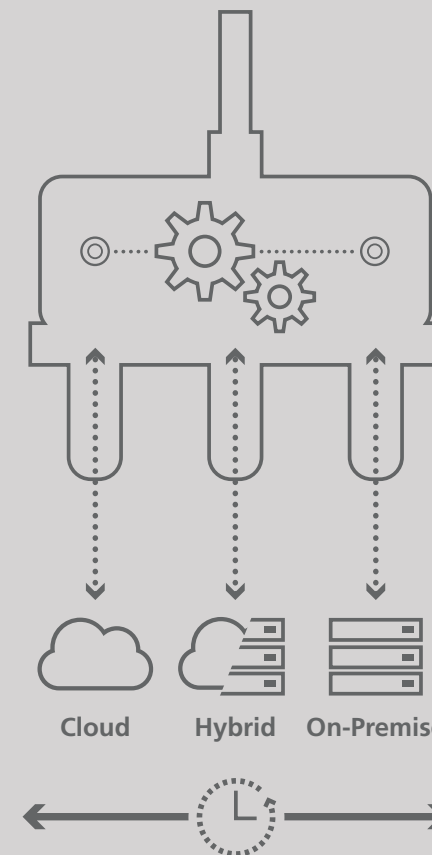
Merchant CloudPro Connectors

ERP – Sage 300 Connector

Seamless, Sage-certified API integration enabling real-time data exchange between ERP Modules (SM, AR, AP, IC, OE, PO) and Merchant CloudPro

Connector Architecture

- Real-time data exchange between all applications connected through Edisoft
- On-Premise, Cloud or Hybrid connectivity
- Configurable + Menu-Driven integration to Applications (No software coding required!)
- Standard canonical data model for simplified reporting



Why Edisoft is Unique

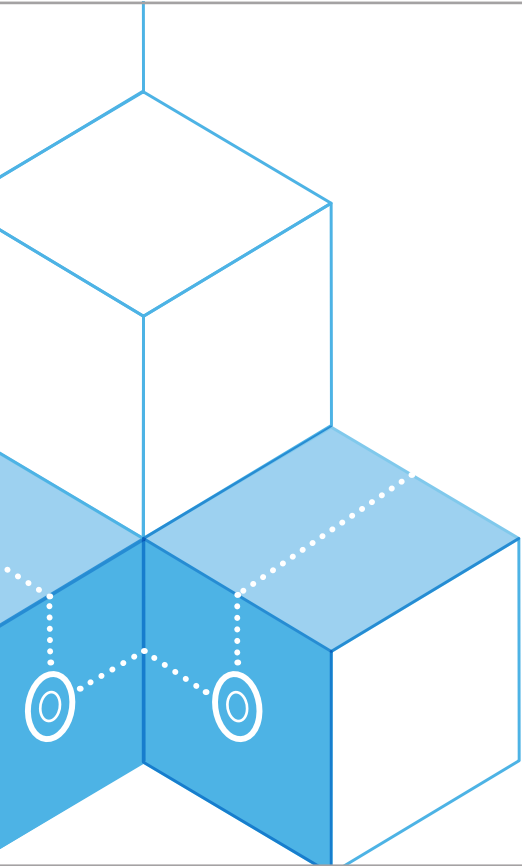


Automate & Optimize Your Workflow with One Vendor

- Process more sales orders, shipments & invoices with fewer staff, through automation
- Seamlessly pass real-time data between your accounting, order desk, and warehouse departments to improve collaboration
- Standardize your EDI fulfillment workflow
 - Automated printing of all vendor-compliant documents through a single user interface
 - Auto-generate and send ASN (packing & shipment) and other outbound EDI documents to increase productivity and financial margins per customer account/order

End-to-End Financial, EDI and Carrier Compliance

Technical Specs



Browsers

Recommended

Chrome

Others Supported

FireFox

Internet Explorer

Edge

Safari

Printers

Recommended Label Printer

Zebra

Other Recommended Printers

Laser Jet Printer

Recommended Printer Viewer

Adobe Acrobat Reader – for highest quality

sage ISV Rockstar

sage 300

For more information on how we can help improve your supply chain performance contact:

toll free: 1-877-334-0030

sales@edisoft.com

www.edisoft.com

edisoft®