

## Wonderware connectivity in five simple steps.

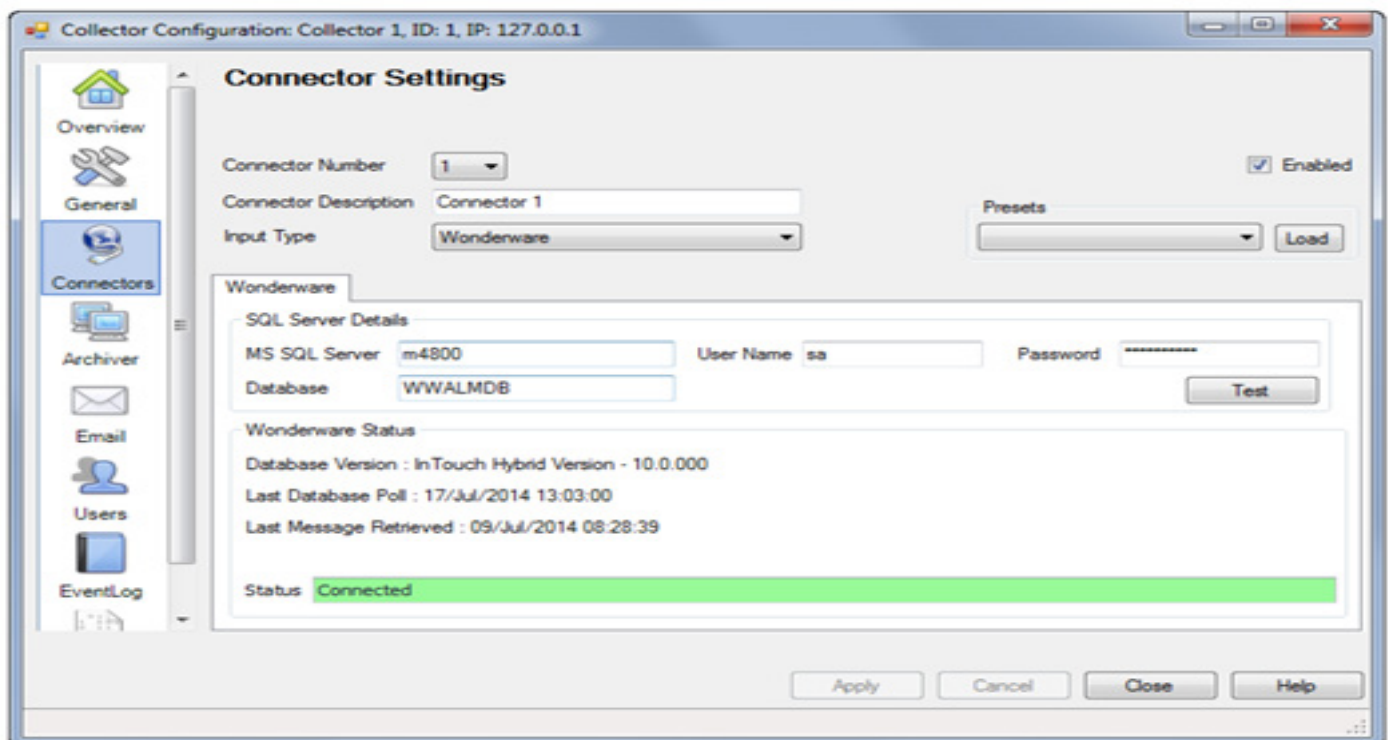
The ProcessVue Data Collector can directly communicate to a Wonderware® database to extract alarm information.

With the ProcessVue Collector it is possible to create a simple connection to the internal Wonderware SQL Database. This procedure may be defined as follows:

1. Input Type - select "Wonderware" from the dropdown menu
2. Enter the MS SQL Server "Name"
3. Enter User Name & Password in the required fields
4. Enter the default database "WWALMDB"
5. Test the connection

Note: ProcessVue must be either on the same network or be able to route to the same network as the Wonderware machine

### Screenshot of the ProcessVue Collector configuration



## Wonderware Data Format

Data received from Wonderware is formatted in a comma delimited string - Use the Data Archiver Parser to extract the required fields.

ID	Wonderware Field Description	Suggested ProcessVue Field
1	EventStamp	Automatically assigned to internal datetime field
2	GroupName	PlantArea
3	TagName	Tag
4	TagType	
5	AlarmType	AlarmStatus
6	Priority	PVPriority
7	OperatorName	Operator
8	Comment	
9	AlarmTransition	AlarmAction
10	AlarmState	
11	AlarmClass	
12	LimitString	
13	ValueString	
14	OutStandingAcks	
15	AlarmDetailID	

Please contact our technical department ([support@mac-solutions.co.uk](mailto:support@mac-solutions.co.uk)) for further details.



MAC Solutions (UK) Ltd  
Units 6 & 7 Kingfisher Business Park  
Arthur Street  
Redditch  
B98 8LG  
01527 529 774  
[www.mac-solutions.net](http://www.mac-solutions.net)