

Foxboro connectivity in five simple steps.

Foxboro connectivity can be achieved via a utility known as “Message Logger” which comes as part of the I/A Tools suite. It allows alarms and events to be sent to a USB port.

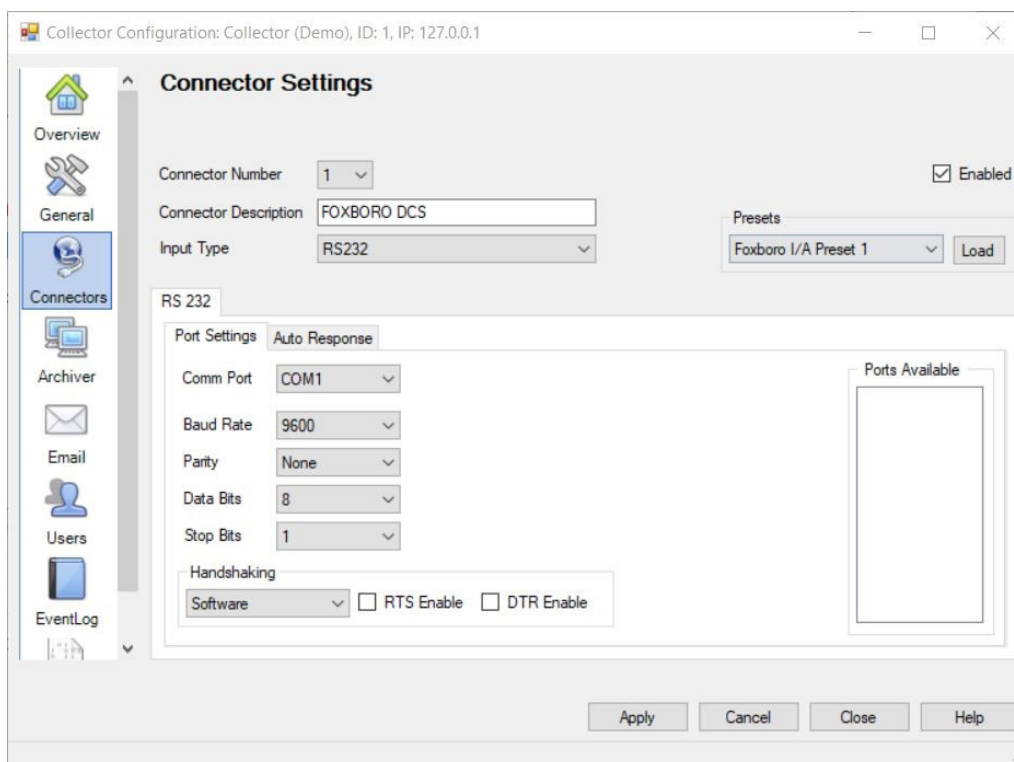
Using a USB to Serial converter you can send the alarms and events straight to ProcessVue.

The ProcessVue Data Collector when configured for a serial connection will collect all of the alarms and events sent to it from the Foxboro system.

The procedure below details the steps for setting ProcessVue to collect alarms and events from a Foxboro system via a serial connection:

1. Input Type - select “RS232” from the dropdown menu
2. Select an available Comm port
3. Select either “Foxboro I/A Preset 1” or “Foxboro I/A Preset 2”
4. Click “Load”
5. Select the “Enabled” check box, ensuring a tick is present and click ‘Apply.’

Screenshot of the ProcessVue Collector configuration



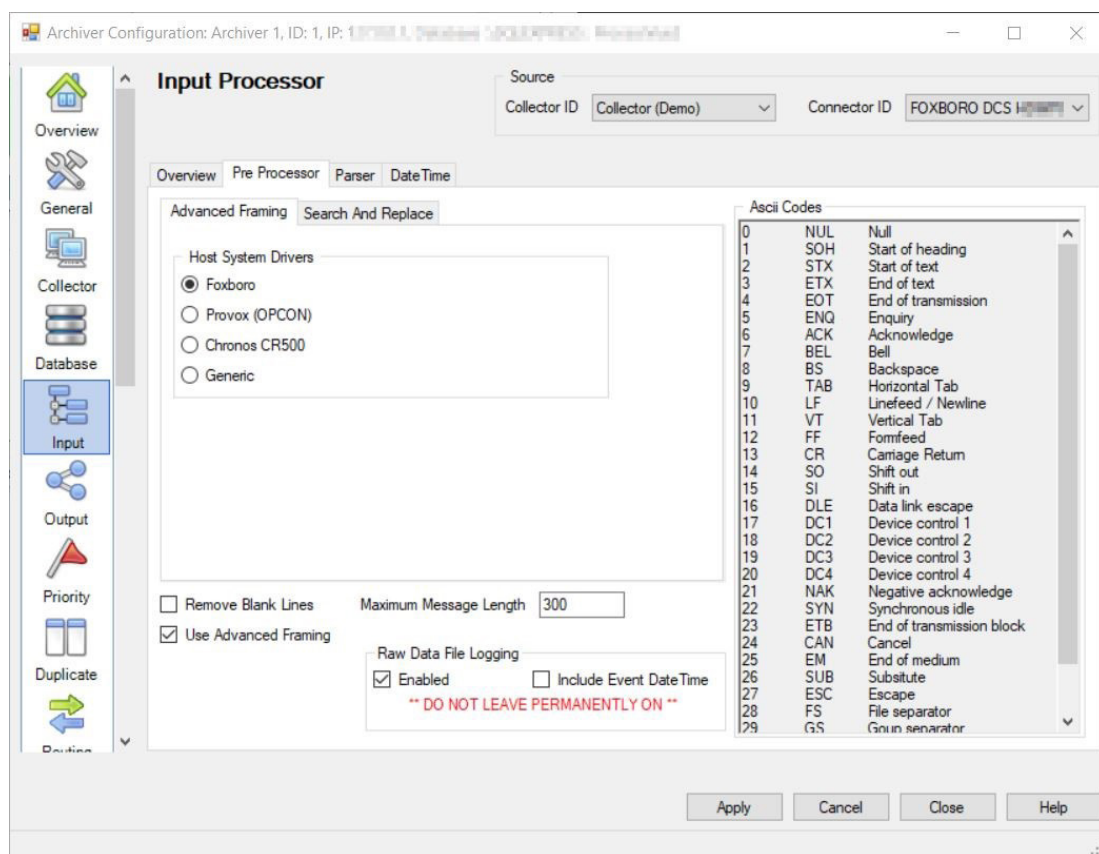
Data received from Foxboro will depend on the formatting chosen in the Message Logger utility, as such there are no generic parsing rules that will fit all systems. Please contact MAC Solutions for assistance with your parsing configuration.

When collecting alarms from a Foxboro system, the alarms and events may be sent over multiple lines.

Message Format:

<13>XXYY:12TAH345 XYY 335 TEMPERATURE STATE <10>
<13>01-09-08 00:33:27:3 RTN <10>

In these scenarios it may be necessary to enable the “Use Advanced Framing” option from the Archiver Configurator as per the screenshot below:



The advanced framing when set to the Foxboro option, combines the two lines into one cohesive alarm string, making it easier to read in ProcessVue.

Please contact our technical department (support@mac-solutions.co.uk) for further details.



MAC Solutions (UK) Ltd
Units 6 & 7 Kingfisher Business Park
Arthur Street
Redditch
B98 8LG
01527 529 774
www.mac-solutions.net