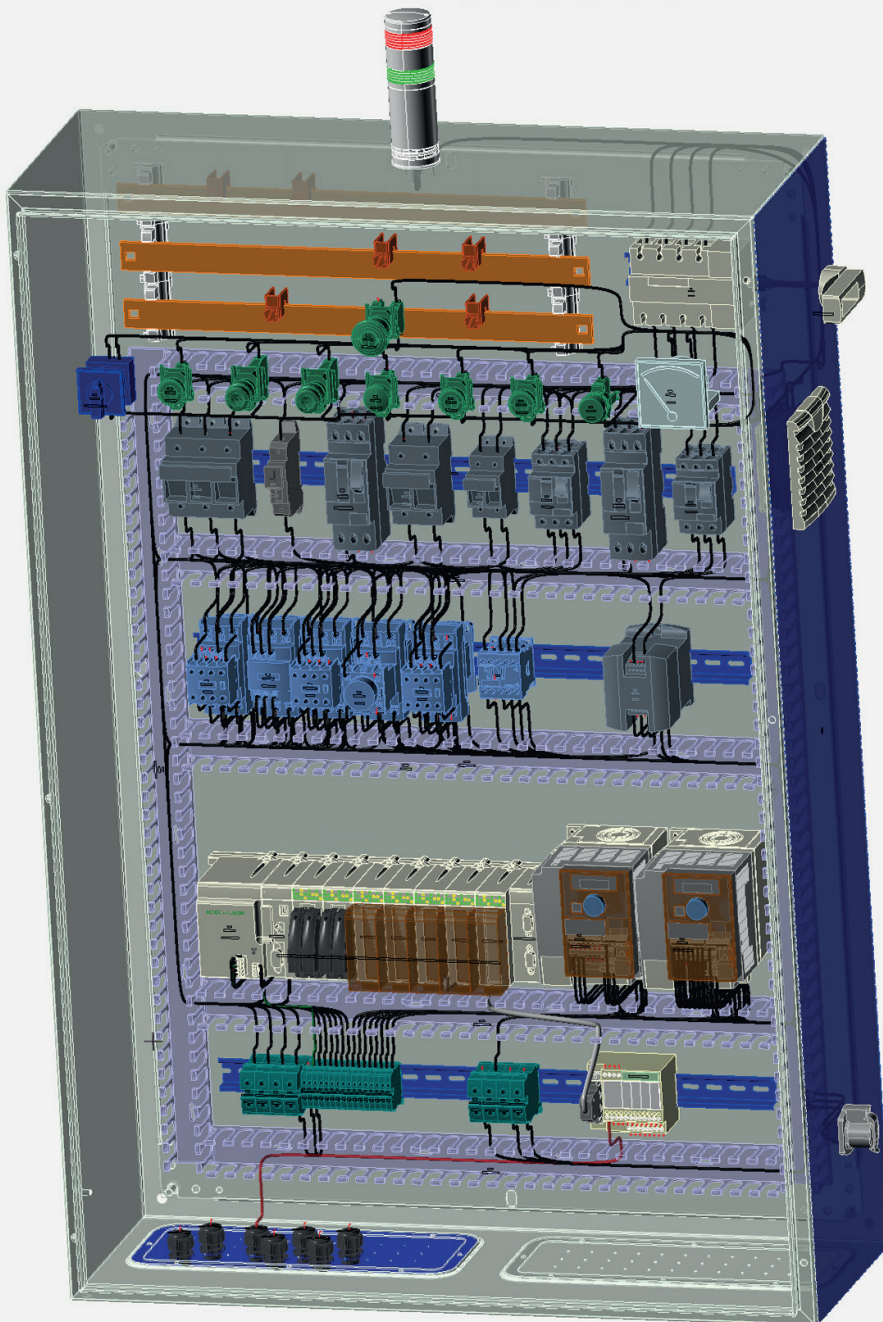




SEE Electrical 3D Panel+

Simplify the installation and assembly of your cabinets



With 3D Panel+:

- harness the power of 3D using a professional intuitive interface;
- automate panel mounting and assembly;
- reduce design, manufacturing and startup costs.

Main Features:

- schematic and 3D panel design integration;
- simple 3D placement of all equipment, snap-to-rail or surface;
- collision detection;
- consistency check with schematic diagram;
- wire routing;
- optimal wire lengths calculation;
- segregation;
- STEP AP203, STEP AP214 import and export;
- component and wiring imports from other Electrical CAD vendors (Eplan, etc.) or from an Excel spreadsheet.

Manufacturing support:

- DXF/DWG export (punching, drilling and cutting detail);
- wire processing machine integration (Komax, Schleuniger...);
- cutting center integration for ducts and rails;
- CNC integration (Rittal, Steinhauer...).

Also available as an add-on module for:



SEE Electrical



SEE Electrical Expert

IGE+XAO Group



+ Headquarters | R&D ○ Subsidiaries ▲ Support X Partners

- 33 years of experience
- More than 91.000 licences sold
- 30 locations in 20 countries
- 360 employees

IGE+XAO Group – UK office
 7, Riverside Court – Station Road
 Croft – Leicestershire LE9 3EL
T. +44 (0) 1455 817455 – Sales
 +44 (0) 1455 817456 – Support

IGE+XAO Group – Head office
 16 Boulevard Déodat de Séverac
 CS 90 312 – 31 773 Colomiers CEDEX
 France
T. +33 (0)5 62 74 36 36

www.ige-xao.com
 @. info@ige-xao.com