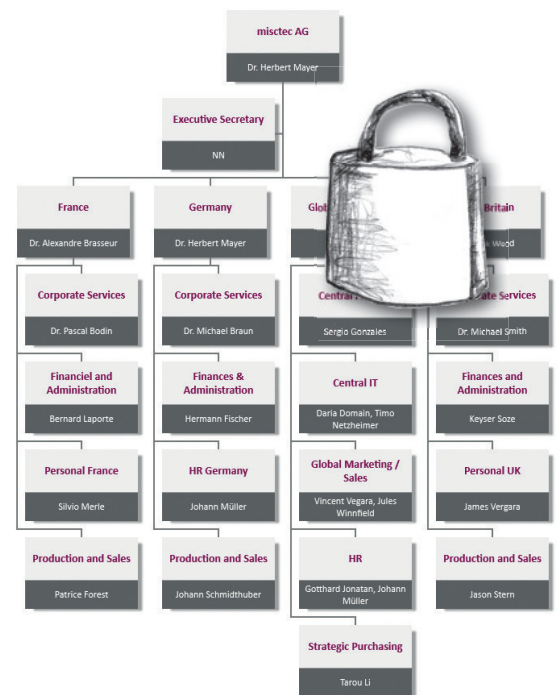


## Access protection

### Distributing information for specific target groups

In addition to creating conventional organizational charts, Ingentis org.manager offers a controlling and reporting function for displaying both performance figures and critical information throughout the company hierarchy. Such data is normally not intended for all employees; in most cases, just for managers. The ‘access protection’ add-on allows you to restrict access to certain areas in the organizational charts or information to certain users.

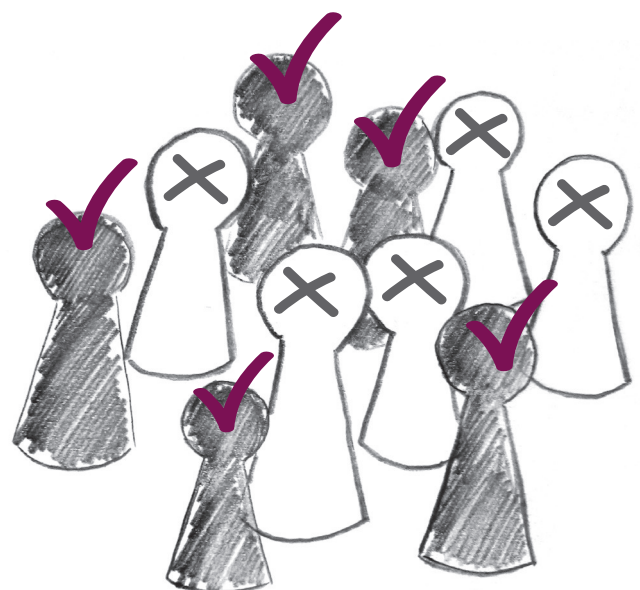


### Freely defined access

A user-friendly interface enables a fast configuration of roles in order to manage individual access rights for your org charts. Using the information from the leading HR system the custom conditions can consider a single or multiple users. A common example are extended access rights for managers to organizational charts with sensitive information like KPI's, which is blocked for the regular staff. Additionally the access right can be configured for hierarchical information such as ‘from one's own department only’. The following options, or combinations thereof, are available:

### Options

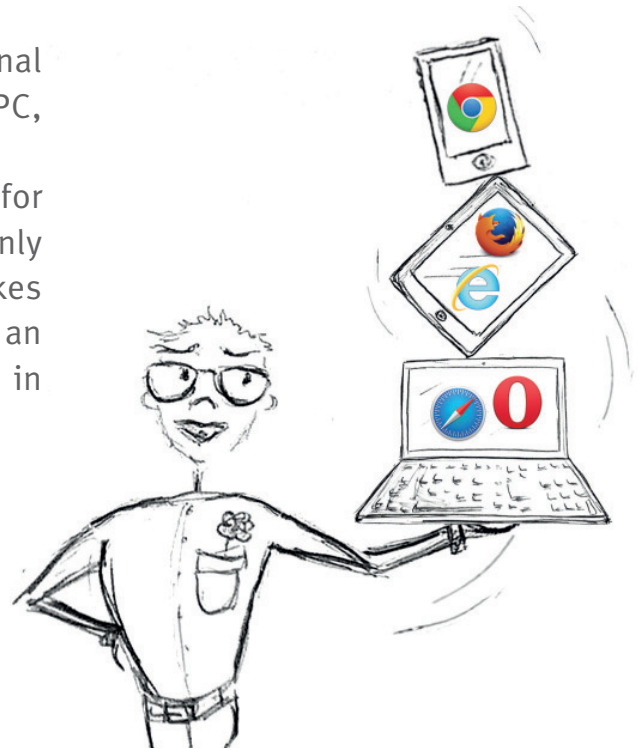
- Grant or deny access to organizational charts
- Activate or lock attributes
- Structurally limit or expand access
- Activate or lock print, search or export functions
- Grant or lock simulation rights



## Available cross-platform - from any device

You can conveniently retrieve the organizational charts cross-platform via a web browser - from PC, tablet or smartphone.

The defined access rules are considered for each and every user individually, and so only the permitted information is visible. This makes Ingentis org.manager a powerful addition to an existing ESS/MMS scenario, or the first step in successfully creating a new one.



## Authentication via Single Sign On

The organizational charts are accessed via Single Sign On, for example through the Active Directory Account. If an employee accesses the application via a web browser, Ingentis org.manager will recognize where this person resides within the organization and shows, using the access rules, the organizational charts concerned.

## Highlights

- Simple control of access authorizations
- Flexible control of print, search or export functions
- Cross-platform access from any device
- Ideal solution for an ESS/MSS scenario

### For more information...

please visit [www.ingentis.com](http://www.ingentis.com)  
or use our service hotline  
**+49 911 98 97 59-0.**

### Ingentis Softwareentwicklung GmbH

Raudtner Str. 7  
90475 Nuremberg / Germany  
Tel: +49 (0)911 98 97 59 - 0  
E-Mail: [mail@ingentis.com](mailto:mail@ingentis.com)

